

FRP Pump Basins

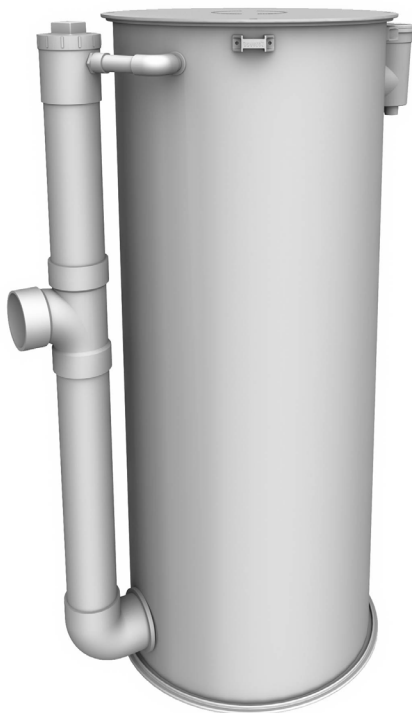
Applications

Orenco fiberglass-reinforced polymer (FRP) Pump Basins are designed to house effluent pumps, sewage pumps, or grinder pumps in wastewater pumping applications. They are not IAPMO listed.

General

Orenco FRP Pump Basins come in 24 and 30in (600 and 750mm) nominal diameters. Bases are fiberglass, attached with methacrylate adhesive. EPDM grommets seal all piping penetrations. A 4in (100mm) inlet elbow and holes to accommodate splice boxes and discharge piping are located and sized to specific need. Fiberglass access lids and stainless steel fasteners are sold separately.

Optional equipment is available.



24in (600mm) PBF24XX FRP Pump Basin
(Shown with optional cleanout and vent)

Wall Thickness

Length	RF24XX	RF30XX
Up to 8ft (2.4m)	0.1875in (5mm)	0.25in (6mm)
8ft (2.4m) - 12ft (3.7m)	0.3125in (8mm)	0.3125in (8mm)
Over 12ft	Custom	Custom

Standard Models

PBF2454, PBF3054

(Custom basins are available for specific configurations.)

Materials of Construction

FRP pipe	Fiberglass-reinforced polymer
Base	Fiberglass-reinforced polymer
Grommets	EPDM

Specifications

Model	O.D., including rib in (mm)	I.D. in (mm)	Liquid capacity gal/in (L/mm)
PB24XX	25.63 (651)	23.50 (597)	1.88 (0.28)
PB30XX	32.13 (816)	29.50 (749)	2.96 (0.44)

Product Code Diagram

PBF + + +

Discharge grommet option:

- HD = Pre-drilled for HDA125
- HD2 = Pre-drilled for HDA200
- 10 = 1in (25mm) grommet
- 12 = 1¼in (32mm) grommet
- 15 = 1½in (38mm) grommet
- 20 = 2in (51mm) grommet

Connector/splice box option:

- CLK = Pre-drilled for ClickTight™
- S = 1in (25mm) grommet installed
- L = 1¼in (32mm) grommet installed
- S1 = SB1 attached
- S2 = SB2 attached
- S3 = SB3 attached
- S4 = SB4 attached
- L5 = SB5 attached
- L6 = SB6 attached
- SX = Pre-installed hub for external splice box*
- XS = Explosion-proof splice box for simplex pumps**
- XD = Explosion-proof splice box for duplex pumps**
- XT = Explosion-proof splice box for triplex pumps**

Cleanout vent option:

- Blank = no cleanout
- COV = cleanout vent included (4in only)

Flow inducer option:

- Blank = no flow inducer
- FI = flow inducer included

Basin height, in (mm):

- 54 = 54 (1372)
- 60 = 60 (1524)
- 66 = 66 (1676)
- 72 = 72 (1829)

Basin diameter, in (mm):

- 24 = 24 (600)
- 30 = 30 (750)

Pump basin, FRP

* Requires minimum 18in (457mm) pump basin height

** For Class I Division 1 environments