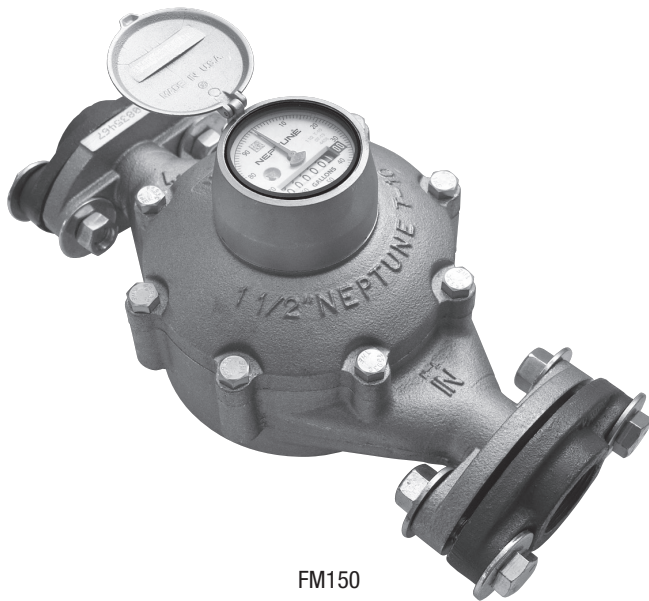


Flow Meters

Applications

Orenco Flow Meters are used to measure cumulative hydraulic flow through a transport line using an analog display with an odometer-type totalizer. In wastewater systems, they precisely measure variable flows of filtered effluent.

For the most accurate information on pairing Orenco's pumps to flow meters, use Orenco's PumpSelect™ software.

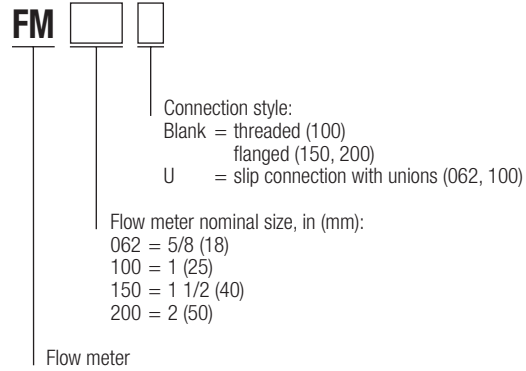


FM150

Standard Models

FM062U, FM100, FM100U, FM150, FM200

Product Code Diagram



Materials of Construction

Model	FM062, FM100	FM150, FM200
Main case	Bronze	Lead-free high-copper alloy
Bottom plate	Bronze	Lead-free high-copper alloy
Register box	Bronze	Bronze
Magnets	Plasticized material	n/a
Unions	Sch. 80 PVC	n/a

Specifications

Model	FM062U	FM100 & 100U	FM150	FM200
Length, in (mm)	n/a	10 3/4 (273)	13 (330)	17 (432)
Length w/unions ("U" models), in (mm)	12 (305)	16 (406)	n/a	n/a
Width, in (mm)	4 5/8 (117)	6 3/4 (171)	8 1/16 (205)	9 7/16 (240)
Height, in (mm)	4 9/16 (116)	5 3/4 (146)	8 1/8 (206)	9 5/16 (237)
Standard flow range, gpm (L/min)	1-10 (4-38)	3-25 (11-95)	2-100 (8-379)	2.5-160 (9.5-606)
Maximum intermittent flow, gpm (L/min)	20 (76)	50 (189)	n/a	n/a
Low flow registration*, gpm (L/min)	0.25 (0.9)	0.75 (2.8)	0.75 (2.8)	1 (3.8)
Maximum water pressure, psi (kPa)	150 (1034)	150 (1034)	150 (1034)	150 (1034)
Meter connection and thread	n/a	1 in prong NPT	n/a	n/a
Meter connection with union	1 in slip fit	1 1/4 in slip fit	n/a	n/a
Manufacturer	Xylem's Sensus™	Xylem's Sensus™	Neptune	Neptune

*95% accuracy level