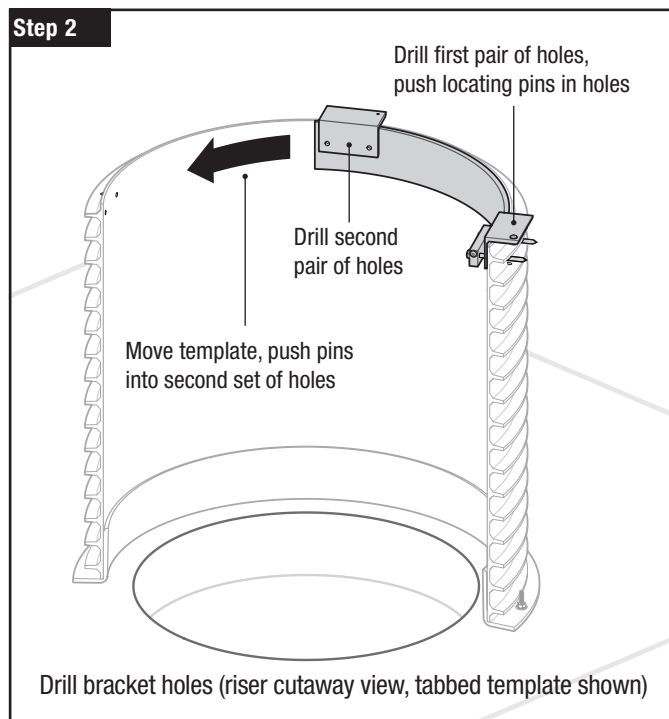
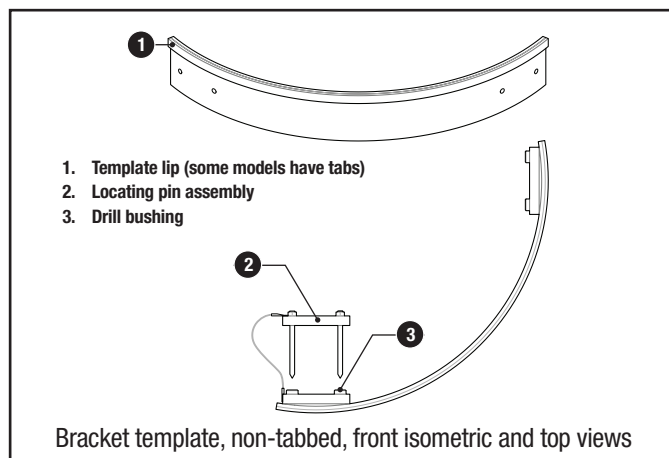


Tank Shield® Field Retrofit

Before You Begin

These instructions explain how to retrofit an Orenco Tank Shield secondary safety device to a 24in PVC or 24in or 30in fiberglass riser in the field. Steps 2 and 3 can be used to install Tank Shield brackets in non-retrofit applications. Read these instructions completely before beginning the retrofit.



Step 1. Prep Area

Step 1a. Dig a trench around the installed riser, 4-5in (104-127mm) wide from the outside edge of the riser and 3-4in (76-104mm) deep.

Step 1b. Remove the access riser lid.

Step 2. Drill Bracket Holes

This step requires a bracket template, a 17/64in (6.75mm) bit, and a driver to drill four pairs of bracket holes around the riser.

Step 2a. Clamp the bracket template in place on the inside of the riser.

1. Rest the template's lip or tabs on top of the access riser.
2. Make sure the template is horizontally level.

Step 2b. Drill the first pair of holes through the drill bushings on the "locating pin assembly" side of the template and through the riser.

Step 2c. Push the locating pins through the first pair of holes.

Step 2d. Drill the second pair of holes through the unpinned drill bushings and through the riser.

Step 2e. Move the template to the next position.

1. Remove the clamp and remove the pins from the first set of holes.
2. Line up the drill bushings on the locating pin side of the template with the second pair of holes.
3. Push the pins into the holes and clamp the template in place.

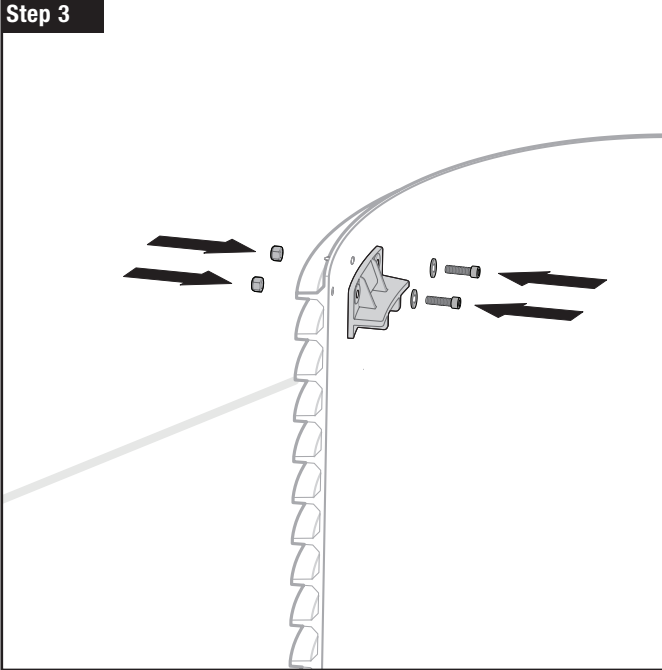
Step 2f. Drill the third pair of holes through the unpinned drill bushings and through the riser.

Step 2g. Move the template to the next position.

1. Remove the clamp and remove the pins from the first set of holes.
2. Line up the drill bushings on the locating pin side of the template with the third pair of holes.
3. Push the pins into the holes and clamp the template in place.

Step 2h. Drill the fourth pair of holes through the unpinned drill bushings and through the riser.

Step 2i. Remove the template from the riser.

Step 3

Step 3. Install Brackets

Attach the four Tank Shield brackets with the included hardware:

- Hex socket head bolts, 1/4in (×8)
- Nylon locking nuts, 1/4in (×8)
- Washers, 1/4in (16 each)

Anti-seize compound is also necessary.

Step 3a. Deburr each of the bracket holes.

Step 3b. Place a washer on each of the bolts.

Step 3c. Apply anti-seize compound to the bolt threads.

Step 3d. Place a bracket on the inside of the riser, aligned with a pair of bracket holes in the riser.

Step 3e. Press a bolt through each bracket hole and out through the riser wall.

Step 3f. Thread a nylon lock nut onto each bolt.

Step 3g. Repeat for the remaining mounting brackets.

Step 3h. Tighten all of the nuts and bolts with a 3/16in hex key and 7/16in socket.

- Tighten until the brackets are snug against the riser wall.
- Do not overtighten the nylon lock nuts.

Step 4. Attach Tank Shield

Step 4a. Place the Tank Shield, logo side up, on the mounting brackets.

Step 4b. Align the tabs on the Tank Shield with the tab catches on the mounting brackets.

Step 4c. Press the Tank Shield down onto the tab catches until all four tabs snap into place.

Step 4d. Lift up on the Tank Shield to make sure it is securely snapped in place.

Step 4e. Reinstall the access riser lid.

Step 4
