

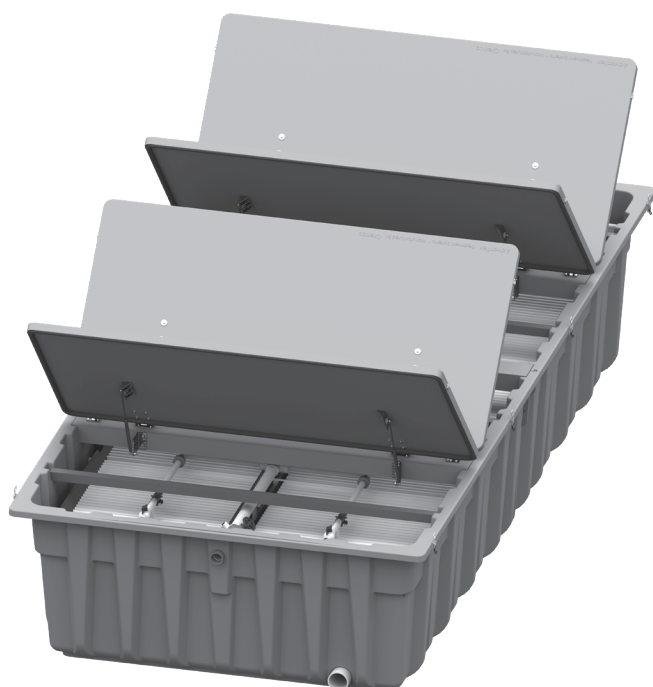
AdvanTex® AX100 Textile Filter

Applications

Orenco's AdvanTex AX100 Treatment System is an innovative technology for onsite treatment of domestic-strength wastewater. The heart of the system is a sturdy, watertight basin filled with an engineered textile material. This lightweight, highly absorbent textile material treats a tremendous amount of wastewater in a small space.

AX100 Treatment Systems are ideal for:

- New construction
- Nitrogen reduction
- Poor soils
- Pretreatment
- System upgrades and repairs
- Small sites



The heart of the AdvanTex AX100 Treatment System is this sturdy, watertight basin filled with sheets of an engineered textile material.

Materials of Construction

Air inlet	ABS
Basin	DCPD, fiber-reinforced polymer (FRP)
Brackets and hardware	Stainless steel
Lid	FRP, closed-cell foam
Liquid inlet	PVC
Liquid outlet	PVC

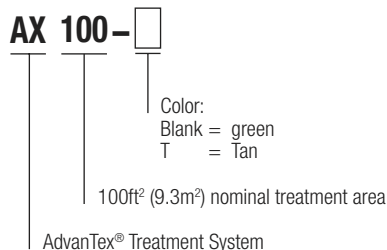
Features/Specifications

To specify this product, require the following:

- Wastewater treatment to better-than-secondary treatment standards
- Consistent treatment, even during peak flows
- Timer operation for flow monitoring, flow modulation, and surge control
- Fixed-film, engineered textile media, operated in an unsaturated condition
- Consistent media quality
- Low energy consumption
- Low maintenance requirements
- Complete, premanufactured package, ready to install
- Watertight construction
- Corrosion-proof materials and components
- Fiberglass foam-core lid with R-6 (RSI1.1) insulation value
- Quiet operation

For AX100 Treatment System sizing, see [NDA-ATX-1, AdvanTex Design Criteria: Commercial Treatment Systems](#).

Product Code Diagram



Specifications*

Length, in (mm)	191 (4851)
Width, in (mm)	92 (2337)
Height, in (mm)	40 (1016)
Area (footprint), ft ² (m ²)	121 (11.2)
Air inlet diameter, in (mm)	3 (75)
Liquid inlet diameter, in (mm)	2 (50)
Liquid outlet diameter, in (mm)	4 (100)
Dry weight, lb (kg)	1850 (839)
Lid R-value (RSI)	R-6 (RSI1.1)
Textile sheets	264

* Nominal values provided. See AdvanTex Treatment System drawings for exact dimensions.