

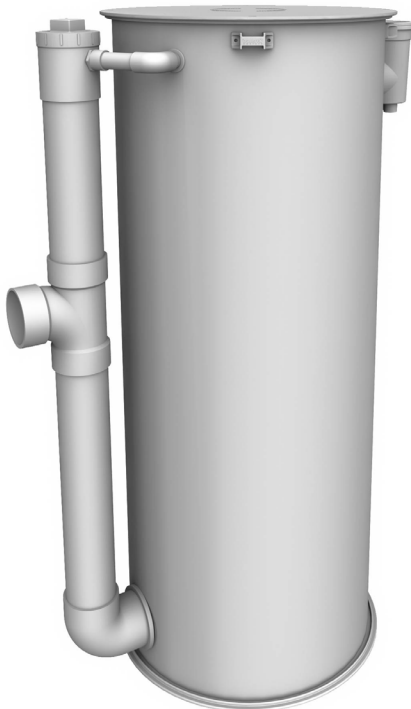
FRP Pump Basins

Applications

Orenco FRP (fiber-reinforced polymer) Pump Basins are designed to house effluent pumps, sewage pumps, or grinder pumps in wastewater pumping applications. They are not IAPMO listed.

General

Orenco FRP Pump Basins come in 24 and 30in (600 and 750mm) nominal diameters. Bases are fiberglass, attached with methacrylate adhesive. EPDM grommets seal all piping penetrations. Lid bolt catches are installed, and a 4in (100mm) inlet penetration is predrilled on all standard models, with additional, optional penetrations available. Fiberglass access lids and stainless steel fasteners are sold separately.



24in (600mm) PBF24XX FRP Pump Basin
(shown with optional cleanout vent installed)

Wall Thickness

Length	PBF24XX	PBF30XX
<8ft (2.4m)	0.1875in (5mm)	0.25in (6mm)
8-10ft (2.4-3.05m)	0.25in (6mm)	0.3125in (8mm)
>10 to 12ft (>3.05-3.66m)	0.3125in (8mm)	Custom

Standard Models

PBF3054, PBF3060, PBF3084

Product Code Diagram

PBF [] [] [] [] + [] + []

- Discharge grommet option:
 - Blank = No discharge grommet
 - HD = Predrilled for HDA125
 - 10 = 1in (25mm) grommet
 - 12 = 1 1/4in (32mm) grommet
 - 15 = 1 1/2in (38mm) grommet
 - 20 = 2in (51mm) grommet
- Connector/splice box option:
 - Blank = No connector/splice box
 - CLK = Predrilled for ClickTight™
 - S = 1in (25mm) grommet installed
 - L = 1 1/4in (32mm) grommet installed
 - S1 = SB1 attached
 - S2 = SB2 attached
 - S3 = SB3 attached
 - S4 = SB4 attached
 - L5 = SB5 attached
 - L6 = SB6 attached
 - SX = Preinstalled hub for external splice box; minimum pump basin height 18in (457mm)
 - XS = Explosion-proof splice box for simplex pumps
 - XD = Explosion-proof splice box for duplex pumps
 - XT = Explosion-proof splice box for triplex pumps (Explosion-proof splice boxes are used in Class I Division 1 environments)
- Cleanout vent option:
 - Blank = No cleanout
 - COV = Cleanout vent included (4in only)
- Flow inducer option:
 - Blank = No flow inducer
 - FI = Flow inducer included
- Basin height, in (mm):
 - 54 = 54 (1372)
 - 60 = 60 (1524)
 - 66 = 66 (1676)
 - 72 = 72 (1829)
 - 84 = 84 (2134)
 - 96 = 96 (2438)
- Basin diameter, in (mm):
 - 24 = 24 (600)
 - 30 = 30 (750)

FRP pump basin

Not all product code configurations may be available as standard products.

Materials of Construction

FRP pipe	FRP
Base	FRP
Grommets	EPDM

Specifications

Model	I.D., in (mm)	Liquid capacity, gal/in (L/mm)
PBF24XX	23.50 (597)	1.88 (0.28)
PBF30XX	29.50 (749)	2.96 (0.44)